



Please scan this QR code to have access to our APPs and Products information.

DS3D Microinverter Quick Installation Guide

Step 1. Verify that grid voltage is matching with microinverter rating

Step 2. Y3 AC Bus Cable distribution

- a. One end of the AC bus cable is used to access the junction box into the power grid.
- b. Wire the conductors of the AC bus: L - BROWN; N - BLUE; PE - YELLOW GREEN(European Standard); or L1 - BLACK; L2 - RED; PE - GREEN(American Standard).

NOTE: Wiring color code can be different according to the local regulation. Check all the wires of the installation before connecting to the AC bus to be sure they match. Wrong cabling can damage irreparably the microinverters: such damage is not covered by the warranty.

Step 3. Attach the APsystems Microinverters to the Racking

NOTE: Install the microinverters (including DC and AC connectors) under the PV modules to avoid direct exposure to rain, UV or other harmful weather events. Allow a minimum of 1.5 cm (3/4") below and above the casing of the microinverter to allow proper air flow. The racking must be properly grounded as per local electrical code.

ATTENTION: Do NOT carry the microinverter by the AC cable. This may cause the AC cable to partially or fully disconnect from the unit, resulting in no or poor operation.

- a. Mark the location of the microinverter on the rack, with respect to the PV module junction box or any other obstructions.
- b. Mount one microinverter at each of these locations using hardware recommended by your module racking vendor.

TIP:When flush-mounting photovoltaic modules on the rooftop, please reserve the DC connectors, antenna, and LED indicator of the microinverter facing outwards to facilitate monitoring of indicator status and ensure optimal communication quality.

Step 4. Ground the system

Y3 AC Bus cable has an embedded PE wire: this might be sufficient to ensure proper grounding of the whole PV array. However in areas with special grounding requirements, external grounding work may still be needed, using the grounding lug supplied with the Microinverter.

Step 5. Connect the APsystems Microinverter to AC bus cable

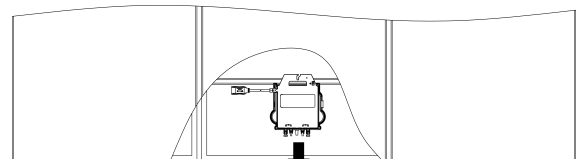
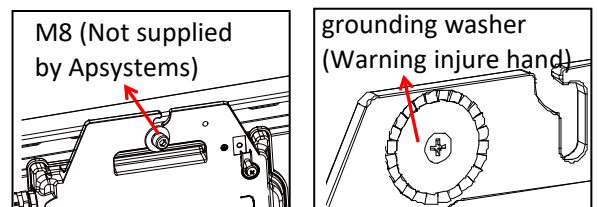
Insert the microinverter AC connector into the trunk cable connector. Make sure to hear the “click” as a proof of robust connection.

① **Best Practice:** Use the Bus Cable Unlock Tool of AC Bus to disconnect the connectors.

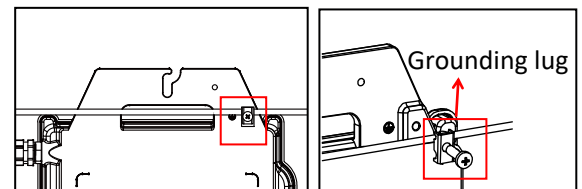
② **NOTE:** AC connector interface as follows.

③ **NOTE:** Cover any unused connectors with Bus Cable Y-CONN to protect the unused connectors.

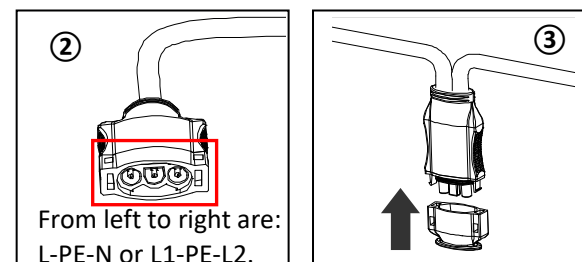
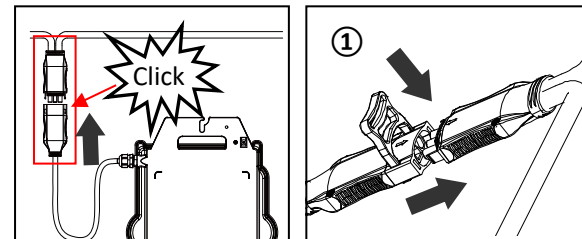
Step 6. Install a Bus Cable End Cap at the end of AC bus cable



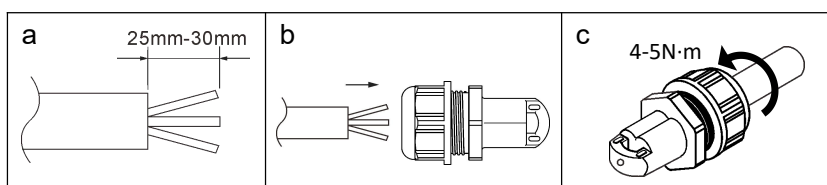
Throughfare



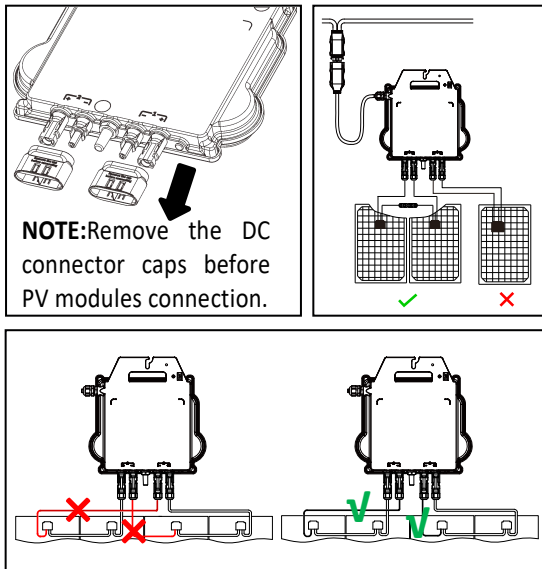
Grounding lug



From left to right are:
L-PE-N or L1-PE-L2.



Step 7. Connect APsystems Microinverters to the PV Modules



NOTE: When plugging in the DC cables, the microinverter should immediately blink green ten times. This will happen as soon as the DC cables are plugged in and will show that the microinverter is functioning correctly. This entire check function will start and end within 10 seconds of plugging in the unit, so pay careful attention to these lights when connecting the DC cables.

WARNING: Double check to make sure all of the AC and DC wiring has been correctly installed. Ensure that none of the AC and/or DC wires are pinched or damaged. Make sure that all of the junction boxes are properly closed.

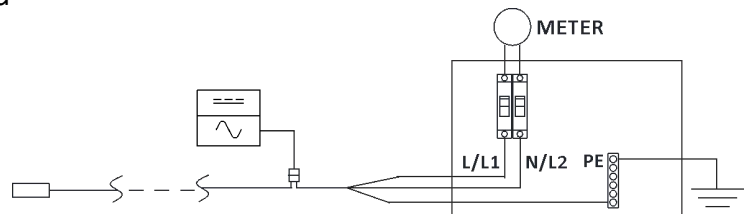
WARNING: Each PV panel must be carefully connected to the same channel. Make sure to not split positive and negative DC cables into two different input channels: microinverter will be damaged and warranty will not apply.

NOTE: Each channel connects 2 PV modules in series (For PV modules with $V_{oc} < 60V$). The input channel will not work if connects to a single module ($V_{oc} < 60V$).

That means the quantity of PV modules in the system is even number.

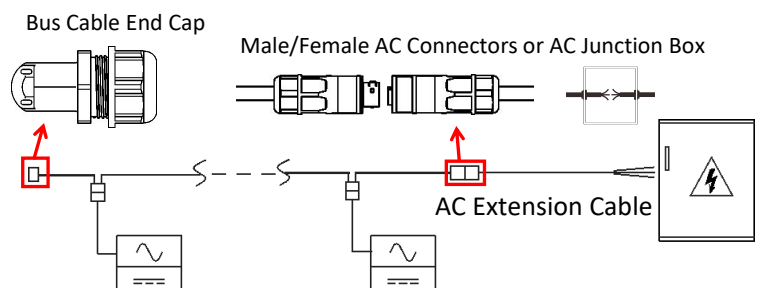
Step 8. Connect APsystems Microinverters to Grid

- Please install bi-polar circuit breakers with proper rated current or according to the local regulation, which are mandatory to connect to grid.
- Leakage current breakers or AFCI/GFCI breakers are not recommended to install.



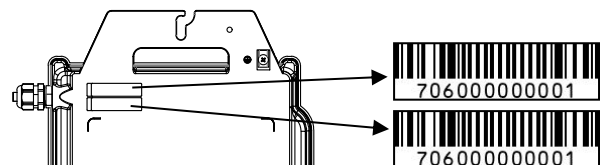
Step 9. AC Extension Cable

When AC extension cable is needed, users could connect the AC bus cable and AC extension cable in a junction box or use a pair of male/female AC connectors that APsystems provides as optional accessory.



Step 10. Complete the APsystems installation map

- Each APsystems Microinverter has 2 removable serial number labels.
- Complete installation map by sticking ID label of each microinverter at the right location.
- The second serial number label, could be stuck on the solar module frame, which could help later to confirm the position of the microinverter without dismantling the PV module.



- NOTE:**
- The layout of the microinverters' serial numbers installation map is only suitable for typical installation.
 - Installation Map is available in the last page appendix of this manual.
 - Use ECU_APP (available in the EMA Manager) to scan the serial numbers on the map when setting up the ECU (see ECU instruction manual for more info).